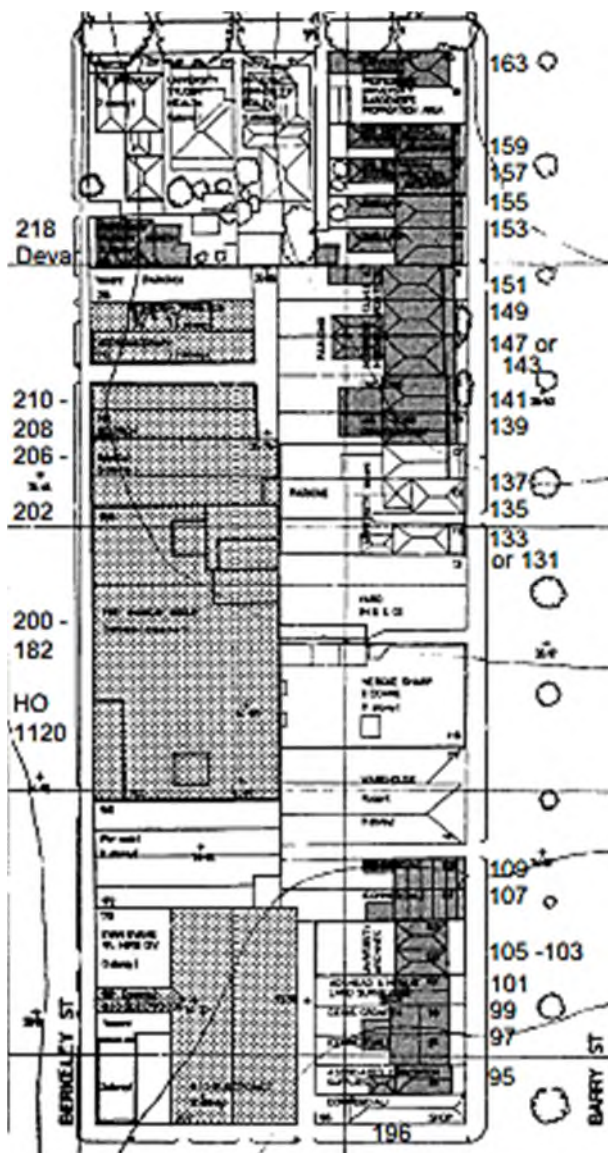


Heritage Review – 2014 to 2017 Inventory Changes Tracked

Barry, Pelham and Berkeley Street Block



City Nth HO1 Heritage Gradings as recommended by RBA Architects

Barry Street	HO No	2014	City N	2015	2016	Dec 2017
95	HO1	C1	C2	C2	C2	Sig/-
97	HO1	C1	C2	C2	C2	Sig/-
99	HO1	C1	C2	C2	C2	Sig/-
101	HO1	C1	C2	C2	C2	Sig/-
103	HO1	C1	C2	C2	C2	Sig/-
105	HO1	C1	C2	C2	C2	Sig/-
107	HO1	C1	C2	C2	C2	Sig/-
109	HO1	C1	C2	C2	C2	Sig/-
131/133	HO1	C1	C2	C2	C2	Sig/-
135	HO1	C1	D2	D2	D2	Contrib./-
137	HO1	C1	D2	D2	D2	Contrib./-
139	HO1	C1	C2	C2	C2	Sig/-
141	HO1	C1	C2	C2	C2	Sig/-
143/147	HO1	A1	A2	A1	A1	Sig/-
149	HO1	A1	A2	A1	A1	Sig/-
151	HO1	A1	A2	A1	A1	Sig/-

153	HO1	C1	C2	C2	C2	Sig/-
155	HO1	C1	C2	C2	C2	Sig/-
157	HO1	C1	C2	C2	C2	Sig/-
159	HO1	C1	C2	C2	C2	Sig/-
Pelham St						
196	HO1	C1	C2	C2	C2	Sig/-
Berkeley St						
182 – 200	HO1120	-	C2	C2	C2	Significant/-
202 – 206	HO1120	-	D2	D2	D2	Contributory/-
208 - 210	HO1120	-	D2	D2	D2	Contributory/-
218	-	B3	?	B3	B3	- [demolished]



131-139 Barry Street



139-141 Barry Street



147-151 Barry Street

Barry Street has been graded a Level 1 Streetscape for thirty years; what has changed? Although the new buildings at the Pelham and Grattan Street corners may have degraded the streetscape at these locations, this should not have influenced the Streetscape Grading between 131 and 151 Barry Street.

EO 18 July 2018